

# SLP-PV1000 V/Y S

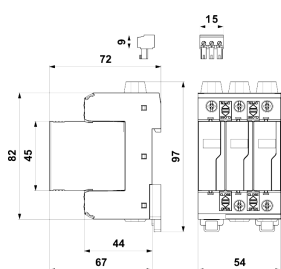
Ordering number 8595090536710

## SPD PV type 2 - Surge Arrester for PV systems

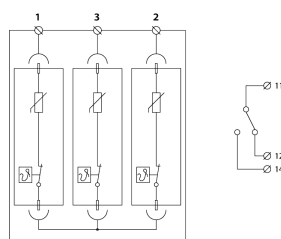
For installation in the DC circuits of solar photovoltaic systems. Remote status signaling (S). Maximum continuous operating voltage for PV application:  $U_{cpv} \geq 1,2x U_{OC\ STC}$ .



Dimension drawing



Basic circuit diagram



## Technical specifications

Type of SPD		PV T2
Maximum operating voltage mode 1/3, 2/3	$U_{cpv}$	1 020 V DC
Nominal discharge current (8/20 $\mu$ s)	$I_n$	15,00 kA
Maximum discharge current (8/20 $\mu$ s)	$I_{max}$	30,00 kA
Voltage protection level mode 1/2	$U_p$	4,00 kV
Voltage protection level mode 1/3, 2/3	$U_p$	4,00 kV
Short-circuit current rating	$I_{SCPV}$	1 000 A DC
Response time	$t_a$	25 ns
Cross-section of connected conductors solid (min)		1,00 mm <sup>2</sup>
Cross-section of connected conductors solid (max)		35,00 mm <sup>2</sup>
Cross-section of connected conductors stranded (min)		1,00 mm <sup>2</sup>
Cross-section of connected conductors stranded (max)		25,00 mm <sup>2</sup>
Fault indication		red indication field
Remote indication		potential-free change-over contact
Remote indication contacts		250V/0,5A AC, 250V/0,1A DC
Cross-section of remote indication conductors		1,5 mm <sup>2</sup>
Degree of protection		IP 20
Range of operating temperatures - min		-40 °C
Range of operating temperatures - max		80 °C
Mounting		DIN rail 35 mm
According to standard		EN 50539-11:2013
ETIM Class		EC000941