

# FLP-12,5 V/3 S

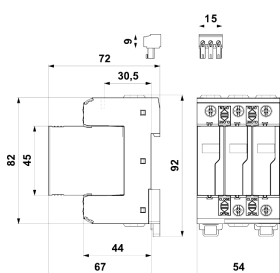
Ordering number 8595090534266

## SPD type 1 and type 2- Lightning Current Arrester and Surge Arrester

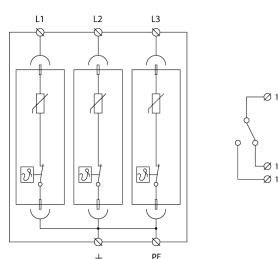
Three-pole varistor lightning current arrester, installation at the boundary of zones LPZ 0 and LPZ 1 or higher. Protection against impact of partial lightning currents, induced surge during a lightning strike or switching surges. For objects in LPL III and IV. Remote status signaling (S).



Dimension drawing



Basic circuit diagram



## Technical specifications

<b>Type of SPD</b>		T1,T2
<b>Nominal voltage</b>	$U_n$	230 V AC
<b>Maximum operating voltage</b>	$U_c$	275 V AC
<b>Maximum operating voltage</b>	$U_c$	350 V DC
<b>Lightning impulse current (10/350 <math>\mu</math>s)</b>	$I_{imp}$	12,50 kA
<b>Nominal discharge current (8/20 <math>\mu</math>s)</b>	$I_n$	30,00 kA
<b>Maximum discharge current (8/20 <math>\mu</math>s)</b>	$I_{max}$	60,00 kA
<b>Voltage protection level at 5 kA</b>	$U_p$	0,90 kV
<b>Voltage protection level</b>	$U_p$	1,20 kV
<b>Short-circuit current rating</b>	$I_{SCCR}$	50,0 kA
<b>Maximum overcurrent protection</b>		160 A gL/gG
<b>Response time</b>	$t_a$	25 ns
<b>TOV 5 s L-N</b>		335 V
<b>TOV characteristic (TOV 5 s)</b>		withstand
<b>Cross-section of connected conductors solid (min)</b>		1,00 mm <sup>2</sup>
<b>Cross-section of connected conductors solid (max)</b>		35,00 mm <sup>2</sup>
<b>Cross-section of connected conductors stranded (min)</b>		1,00 mm <sup>2</sup>
<b>Cross-section of connected conductors stranded (max)</b>		25,00 mm <sup>2</sup>
<b>Fault indication</b>		red indication field
<b>Remote indication</b>		potential-free change-over contact
<b>Remote indication contacts</b>		250V/0,5A AC,250V/0,1A DC
<b>Cross-section of remote indication conductors</b>		1,5 mm <sup>2</sup>
<b>Degree of protection</b>		IP 20
<b>Range of operating temperatures - min</b>		-40 °C
<b>Range of operating temperatures - max</b>		80 °C
<b>Mounting</b>		DIN rail 35 mm
<b>According to standard</b>		EN 61643-11:2012, IEC 61643-11:2011
<b>Plug module</b>		FLP-12,5 V/0
<b>ETIM Class</b>		EC001457